

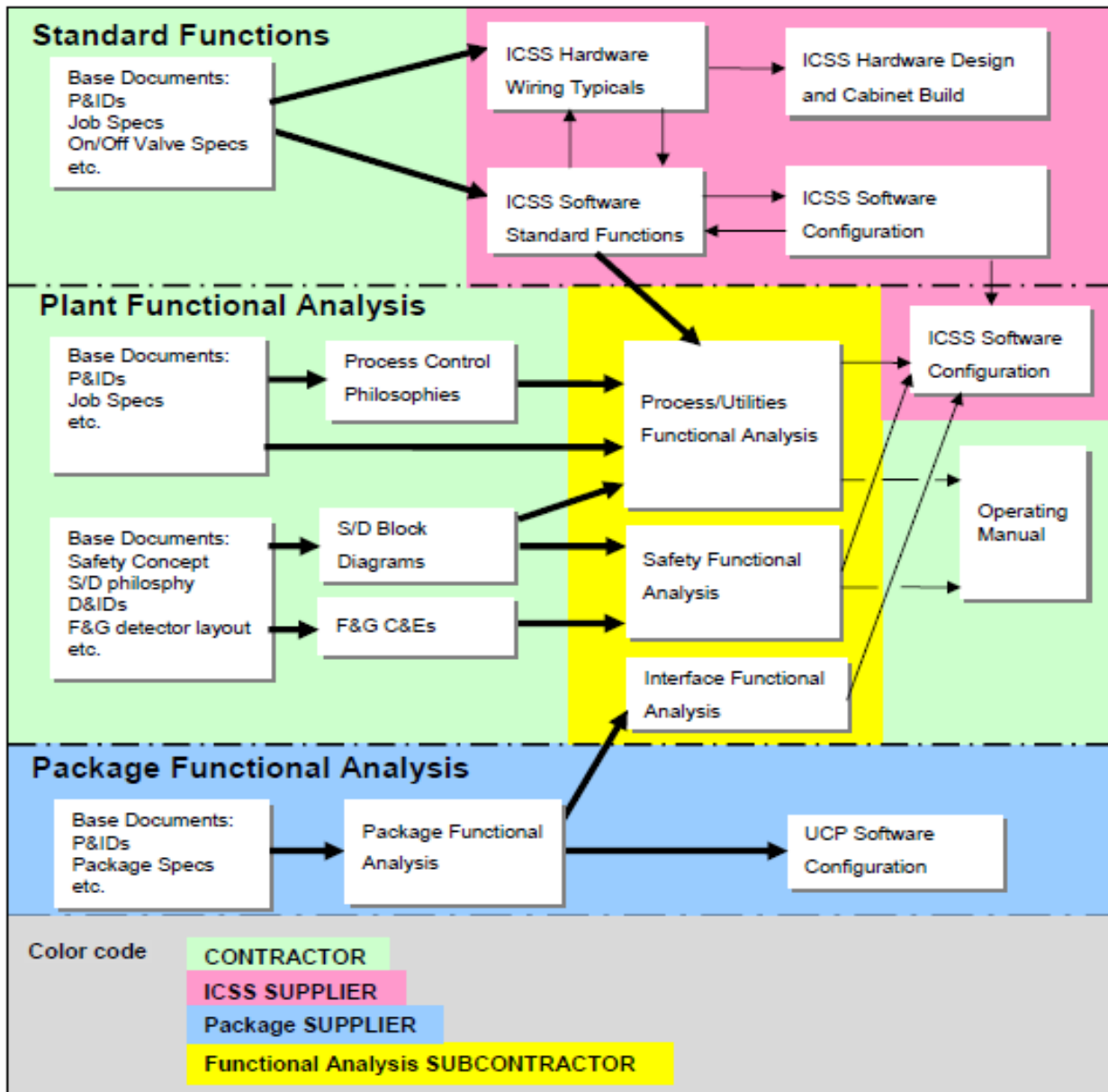


ACTIVITIES

CONTROL NARRATIVE / FUNCTIONAL ANALYSIS



Service Description





**ENGINEERING
SERVICES**



ACTIVITIES

CONTROL NARRATIVE / FUNCTIONAL ANALYSIS



• VALIDATION

• INPUT DATA

CLIENT

EPC

SYSTEM
SUPPLIER

ICSS Specialist
(PARIFEX)

• SOFTWARE
CONFIGURATION

• CONTROL
SYSTEM DESIGN

Input Data Cross
Checking

Reduction of
Configuration
Schedule

Minimize FAT Duration

Cost & Time Saving



ENGINEERING SERVICES

ACTIVITIES

CONTROL NARRATIVE / FUNCTIONAL ANALYSIS

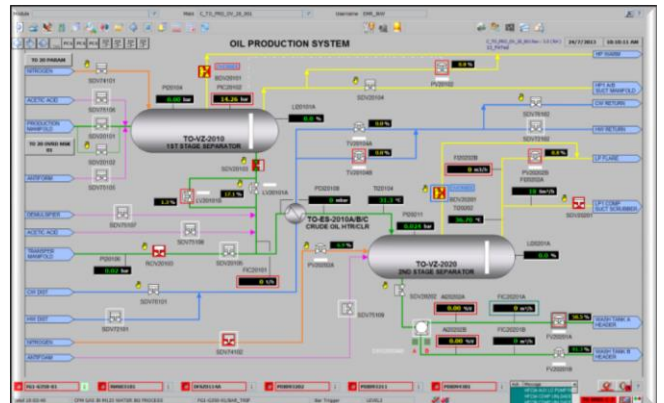


Development of all HMI graphic displays (static definition) on the ICSS System:

PARIFEX will design Process and Safety Static displays as per Graphic rules and a Graphic Library for the project.

Displays will be added at the end of each Control Narrative on AFC revision and native files will be sent to ICSS Supplier for implementation after Client approval or implemented by PARIFEX.

Tanks	Mode	Target flow	Current flow	Max flow authorized
1	OFF	0.00	0.00	0.00
2	OFF	0.00	0.00	0.00
3	OFF	0.00	0.00	0.00
4	OFF	0.00	0.00	0.00
5	OFF	0.00	0.00	0.00
6	OFF	0.00	0.00	0.00
7	OFF	0.00	0.00	0.00
8	OFF	0.00	0.00	0.00
9	OFF	0.00	0.00	0.00
10	OFF	0.00	0.00	0.00
11	OFF	0.00	0.00	0.00
12	OFF	0.00	0.00	0.00
13	OFF	0.00	0.00	0.00
14	OFF	0.00	0.00	0.00
15	OFF	0.00	0.00	0.00
16	OFF	0.00	0.00	0.00
17	OFF	0.00	0.00	0.00
18	OFF	0.00	0.00	0.00
19	OFF	0.00	0.00	0.00
20	OFF	0.00	0.00	0.00





**ENGINEERING
SERVICES**



ACTIVITIES

**CONTROL NARRATIVE /
FUNCTIONAL ANALYSIS**



References

EHRA FPSO



USAN FPSO



CLOV FPSO



Q204 FPSO



ICHTHYS CPF Platform



MOHO Nord Project





ACTIVITIES

CONTROL NARRATIVE / FUNCTIONAL ANALYSIS



References

- ✓ TLP & FPU of MOHO Nord project (HHI / TOTAL E&P Congo – 2014/2015) – ICSS Functional Analysis,
- ✓ CPF Platform of ICHTHYS project (SHI / MUSTANG Engineering/ Inpex – 2012) – ICSS Functional Analysis,
- ✓ CLOV FPSO project (DSME / TOTAL E&P Angola – 2011/2012) – Hull & Topside ICSS Functional Analysis,
- ✓ USAN FPSO (HHI / TOTAL E&P Nigeria – 2008/ 2009) – ICSS Topside Functional Analysis,
- ✓ EHRA FPSO (Invensys / EXXON – 2003/2004) – ICSS Functional Analysis.
- ✓ PARIFEX also participated through technical assistance services to the last TOTAL FPSO projects such as GIRASSOL, DALIA, AKPO projects.
- ✓ New plant for lightweight corrugated medium, capacity 280 000t/y based on recycled fibre (Papeteries de Champagne – France)
- ✓ Extension of containerboard PM1 and speed increase from 400 to 600m/min (Europa&C – Spain)
- ✓ Capacity extension of RCF plant, complete rebuild of 2 paper machines (International Paper Etienne – France)
- ✓ Extension of UWF paper production line, 20 days shutdown (UPM KYMMENE – France)
- ✓ New production line for newsprint, capacity 300 000t/y based on recycled fibre (Holmen Paper Madrid, Spain)
- ✓ New De-inking line for graphic paper (Matussière & Forest – France)
- ✓ New complete tissue mill – PM8 project (Lucart – France)
- ✓ Relocation of a Plasterboard paper production line (RKTK – Ukraine)
- ✓ New RCF plant, complete rebuild of 1 paper machine (Saica France – France)
- ✓ Rebuilding of PM5 press section (Europa&C – France)
- ✓ Modification of the paper machine n°3 for White Top Test Liner production (St Regis Paper Company – United Kingdom)
- ✓ New electrical power generation plant 38MW (Caraibes Energie – La Guadeloupe)
- ✓ Modification of Biomass boiler, new electricity generation, BEEP project (Elyo – France)
- ✓ New Biomass boiler and electricity generation, Biomass project (Tembec – France)