



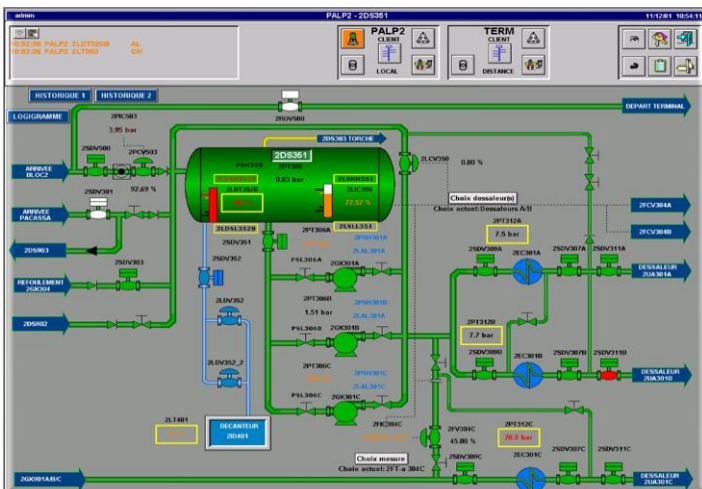
## ACTIVITIES

## SYSTEM INTEGRATION



### Service Description:

- ✓ Pre engineering & obsolescence studies
- ✓ Detailed design
- ✓ Procurement
- ✓ Control System Integration
- ✓ Factory Acceptance Tests
- ✓ Pre commissioning
- ✓ Commissioning
- ✓ Start-up





## ACTIVITIES

## SYSTEM INTEGRATION



## References:

- ✓ Terminal Palanca (Sonangol P&P Angola – 2011): Revamping Cargo Ballast Monitoring System
- ✓ PACF1 Offshore Platform (Sonangol P&P Angola – 2010): Detailed Engineering and configuration of PcVue server
- ✓ PALP1 Offshore Platform (Sonangol P&P Angola – 2010): Detailed Engineering and configuration of Hydrocyclone System
- ✓ PACF4 Offshore Platform (Sonangol P&P Angola – 2010): Detailed Engineering and configuration of PLC for 3 new wells
- ✓ PALP2 Offshore Platform (Sonangol P&P Angola – 2009): Detailed Engineering and configuration of PLC for control of Diatomee Filter
- ✓ PALP2 Offshore Platform (Sonangol P&P Angola – 2009): Detailed Engineering and configuration of PcVue servers and System Upgrade
- ✓ Terminal Palanca (Sonangol P&P Angola – 2009): Detailed Engineering and configuration of PLC for control of Framo pumps
- ✓ Block 3 (Sonangol P&P Angola – 2008): Detailed Engineering and configuration of HMI /PLC for control of 8 test separator
- ✓ PALF2 Offshore Platform (Sonangol P&P Angola – 2008): Detailed Engineering and configuration of PcVue to replace Regard1000 System
- ✓ PACF4 Offshore Platform (Sonangol P&P Angola – 2008): Detailed Engineering and configuration of HMI /PLC for PCS and Safety System of the platform
- ✓ IPSF1 Offshore Platform (Sonangol P&P Angola – 2003): Detailed Engineering and configuration of PLC and PcVue servers
- ✓ New De-inking line for graphic paper (Matussière & Forest – France)