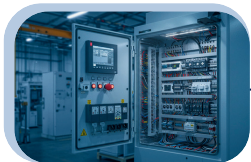




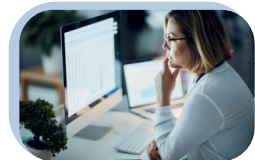
# MANAGE YOUR INDUSTRIAL SYSTEMS FOR SUSTAINABLE PERFORMANCE

For over 30 years, PARIFEX has been helping you modernize and secure your automation and supervision systems: audits, low CAPEX optimization, zero downtime migrations, instrumentation management, and cyber compliance to maximize your performance.



## ICSS Integrator

We support our customers in the integration (Greenfield) and modernization (Brownfield) of their multi-vendor ICSS/automation systems, guaranteeing a secure solution that complies with cyber requirements and meets deadlines.



## Production Optimization

We help you optimize the performance of your facilities, availability, safety, and production performance (OEE), by adjusting process and PLC settings, without CAPEX investment.



## Site Survey

Gain complete visibility into the health, obsolescence, and vulnerabilities of your OT assets through a comprehensive SCADA/ICSS audit. Equipment lifespans are extended and cyber risks are anticipated.

## OUR EXPERTS



**LAMINE BOURAS**  
ENGINEERING MANAGER  
LBOURAS@PARIFEX.COM



**WILLIAM GUILLAUME**  
SALES MANAGER  
WGUILLAUME@PARIFEX.COM



## Lifecycle +

Anticipate SCADA/ICSS support discontinuations through a comprehensive health, cybersecurity, and obsolescence audit, as well as a costed action plan to reduce risk and OPEX.



## ReMiUp (Replace - Migrate - Upgrade)

Security, compliance, performance: we help you combat the obsolescence of your monitoring system through migration or upgrades while maintaining production.



## Instrumentation 360

Is your instrumentation obsolete and your database unreliable? We offer comprehensive support: a reliable, centralized database, engineering, and controlled equipment replacement.



## Functional Analysis & Control Narrative

Reduce risks of FAT failures due to detailed engineering inconsistencies and ensure the full compliance with your client's expectations before starting software developments. Freeze I/O list for hardware configuration and reduce software programming phase.



[www.parifex.com](http://www.parifex.com)



[info@parifex.com](mailto:info@parifex.com)





## SOME REFERENCES...

PARIFEX has engineering offices in France and Malaysia, and experts specializing in automation and instrumentation. Both teams provide engineering, configuration and installation for different global project.

### NIGERIA

#### USAN FIELD FPSO - 2009

**Context :** exploitation of the Usan deepwater field off the coast of Nigeria.

**What we bring to our client :** FA process, ESD, FGS, HIPPS, package interface, OCWR, technical assistance for FAT and start-up.

### NORTH SEA

#### Q204 PROJECT - 2013

**Context :** 130 KBPD and 2,2 million cubic meter of gas per day.

**What we bring to our client :** hull and topside control narratives and technical assistance for FATs.

### QATAR

#### RUYA - 2024

**Context :** production of a large quantity of FA for 10 platforms within 6 months.

**What we bring to our client :** mobilization of our experts and skills in France and Malaysia.

### ALGERIA

#### LPG PIPELINE REVAMPING - 2019

**Context :** rehabilitation of 60 control and supervision units along the pipeline.

**What we bring to our client :** Global EPC for telecom, SCADA, instrumentation, electrical PV plants, and civil engineering studies and works.



### IRAN

#### BIDBOLAND II - 2016

**Context :** construction of a gas treatment plant.

**What we bring to our client :** all system engineering, design, and supply of the ICSS.

### ANGOLA

#### CLOV FPSO - 2011

**Context :** FPSO capacity 160.000 bpd - 34 wells.

**What we bring to our client :** hull and topside detailed ICSS engineering.

### REPUBLIC OF CONGO

#### MOHO TLP / FPU - 2014

**Context :** 100.000 bpd

**What we bring to our client :** detailed ICSS engineering, HMI design, instrumentation database management, OCWR FA, FCW FA, and technical assistance for FATs.

### AUSTRALIA

#### ICHTHYS - 2013

**Context :** CPF capacity 100.000 bpd per day - 50 wells / 1.65 million standard cubic fpd.

**What we bring to our client :** detailed ICSS engineering: process, packages, ESD, FGS and technical assistance for FATs.

PARIFEX has also participated to technical assistance services to other FPSO projects such as GIRASSOL, DALIA, AKPO projects.

Our experts have already worked on these projects during the activities of Functional Analyses preparation, HMI design, TAT, FAT, IFAT, commissioning, and start-up.

## OUR EXPERTS



**LAMINE BOURAS**  
ENGINEERING MANAGER  
LBOURAS@PARIFEX.COM



**WILLIAM GUILLAUME**  
SALES MANAGER  
WGUILLAUME@PARIFEX.COM



[www.parifex.com](http://www.parifex.com)



[info@parifex.com](mailto:info@parifex.com)

